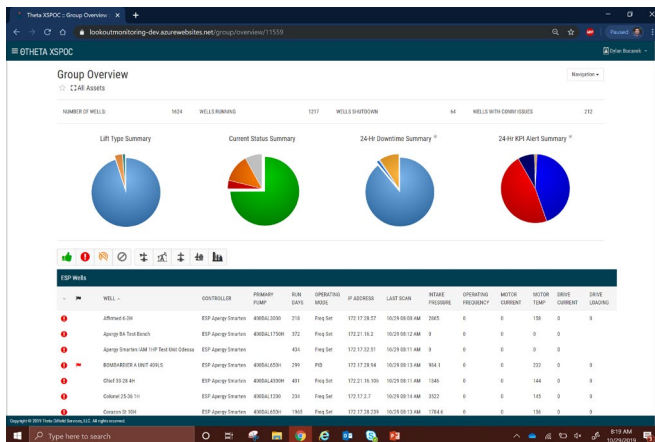
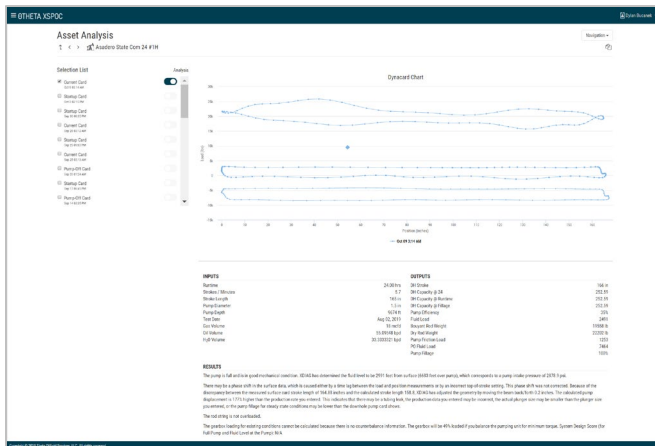


XSPOC Web and Mobile Clients

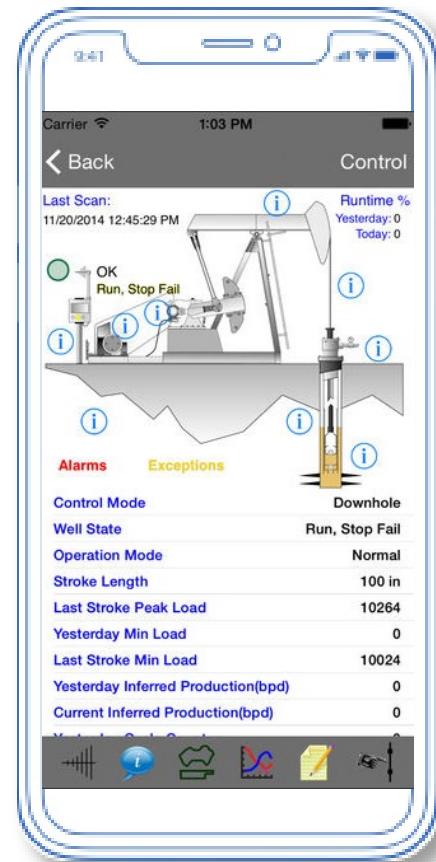
Optimizing your wells and identifying exceptions just got easier. XSPOC web and mobile clients provide the same data our customers know and love, but with a modern look and feel. Access the platform through any connected device. The lite platform and updated design provide a faster experience and intuitive UI to efficiently move you through your tasks.



Group Overview



Card Viewer



Intuitive User Experience

New design is highly intuitive allowing for less training for new users and better optimization efforts



Flexible Access

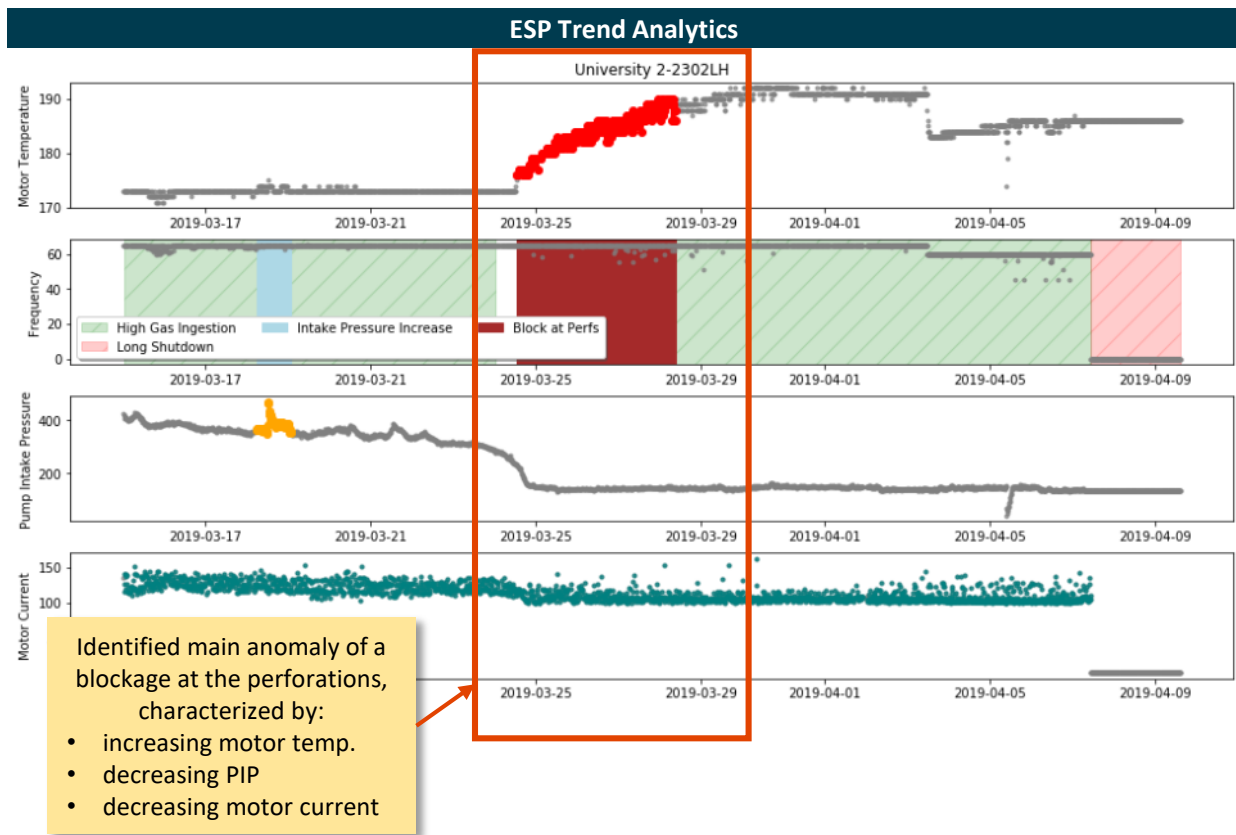
XSPOC web and mobile clients can be accessed anywhere, anytime. No need for a desktop application

XSPOC ESP Trend Analytics

Quickly and accurately identify operational or failure modes with AI models continuously running multivariable trend analysis on up to 7 inputs including:

- ▶ Frequency
- ▶ Pump Intake Pressure
- ▶ Motor Temperature
- ▶ Motor Current
- ▶ Tubing Pressure
- ▶ Casing Pressure
- ▶ Production Data

“It’s like having your best ESP engineer on 24/7, continuously monitoring each well”



Enhance Productivity

Arm your team with AI models that run 24/7 to continuously monitor ESP performance



Faster Identification

Quickly and accurately identify ESP operational or failure modes with AI models



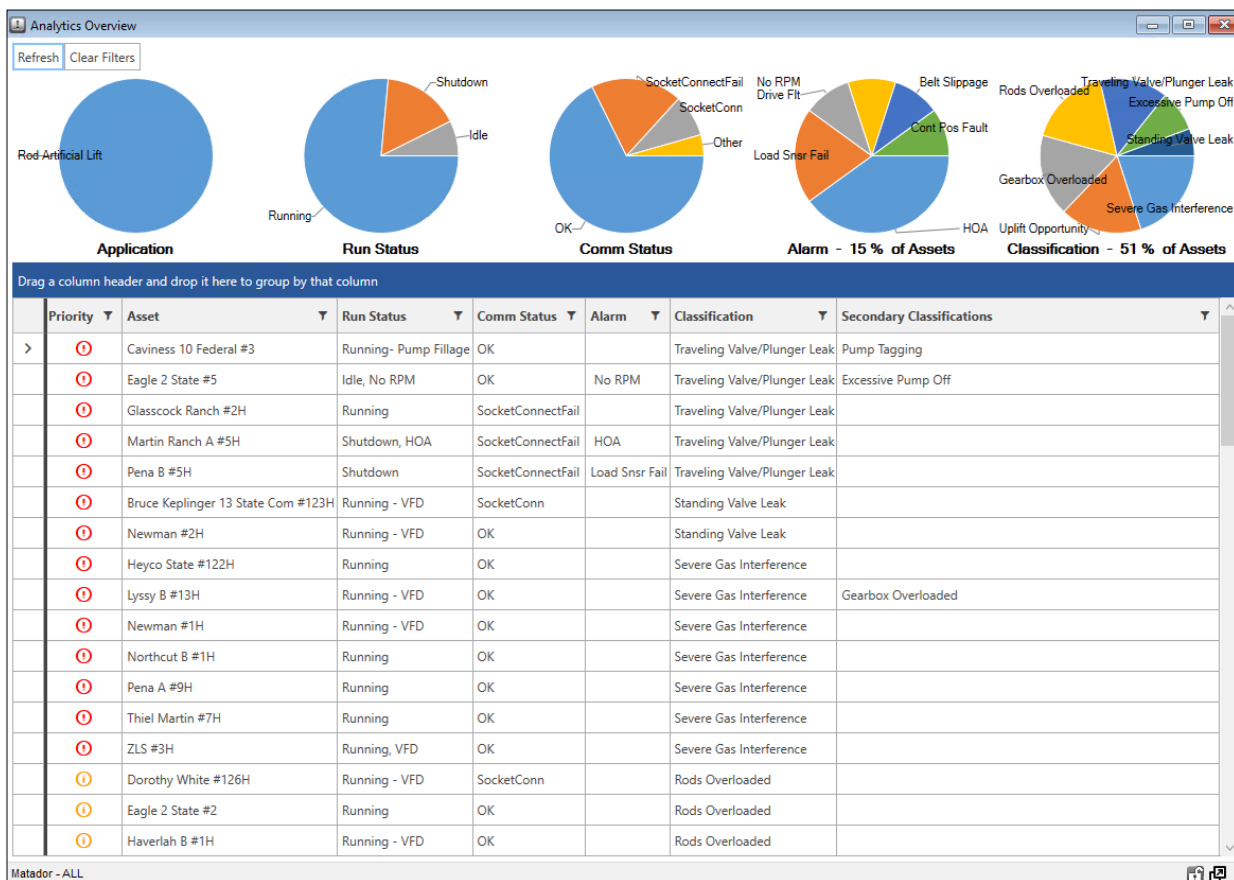
Increase Production

Quickly identify uplift opportunities with AI models, increasing production in suboptimal wells

XSPOC Classification Dashboard

Quickly identify uplift opportunities with XSPOC’s classification dashboard.

- ▶ Updated and modern UI is intuitive, enabling expanded use from all XSPOC users
- ▶ Enhanced filtering and prioritization saves time vs. prior well status screen
- ▶ Superior customization and filtering capabilities quickly identifies opportunities



Available through desktop and web applications



Intuitive UI/UX

Enhanced filtering and classifications provide intuitive identification of high priority wells



Faster Identification

High priority wells are displayed at top of the screen, enabling quicker optimization efforts



Turn Key Solution

Classifications utilizing AI and Physics-based diagnostics are ready to use out of the box

XSPOC Rod Pump Set Point Optimization

Enhance uptime and optimize more wells with XSPOC’s autonomous set points optimization for rod pump controllers.

- ▶ XSPOC autonomously gathers and analyzes historical data to train the set point recommendations. No manual data intervention or human interaction is required.
- ▶ Simply click the “start optimization” button to start expert optimization.
- ▶ From test pilots, results range from low single digit to 25% increase in system uptime

Idle Time Setpoint Optimization

The inputs below will be applied to all selected wells during optimization. Choosing to optimize a well will temporarily adjust its idle time in order to arrive at an optimal value, which will then be available in the Control Center for permanent implementation.

Minimum Idle Time Threshold (minutes) Maximum Idle Time Threshold (minutes)

Optimization Duration (days)

Drag a column header and drop it here to group by that column

Asset	Info	<input type="checkbox"/> Start Optimization
> 1-05-77-11 W6M	Awaiting Initial Start	<input type="checkbox"/>
Airstrip State Com #132H	Communications (well or port level) disabled during optimization Awaiting Initial Start	<input type="checkbox"/>
Airstrip State Com #133H	Communications (well or port level) disabled during optimization Awaiting Initial Start	<input type="checkbox"/>
Airstrip State Com #134H	Awaiting Initial Start	<input type="checkbox"/>
Airstrip State Com #201H	Awaiting Initial Start	<input type="checkbox"/>
Albert 23-28-18 2H	Awaiting Initial Start	<input type="checkbox"/>
Baldwin 2-25-12 1H	Awaiting Initial Start	<input type="checkbox"/>
Baldwin Trust 35-26-12 1H	Awaiting Initial Start	<input type="checkbox"/>
Beefmaster 9-27-14-1H	Awaiting Initial Start	<input type="checkbox"/>
Benjamin 3H	Awaiting Initial Start	<input type="checkbox"/>
Benjamin 5H	Awaiting Initial Start	<input type="checkbox"/>

Available through desktop and web applications



Optimize More Wells

Eliminate manual adjustment of POC set points – AI engine enables optimization across more wells



Enhance Uptime

AI continuously looks at set points of any rod pump well, reducing idle time & unplanned downtime.



Turn Key Solution

Set Point Optimization works out of the box. No manual uploads or customization is needed.